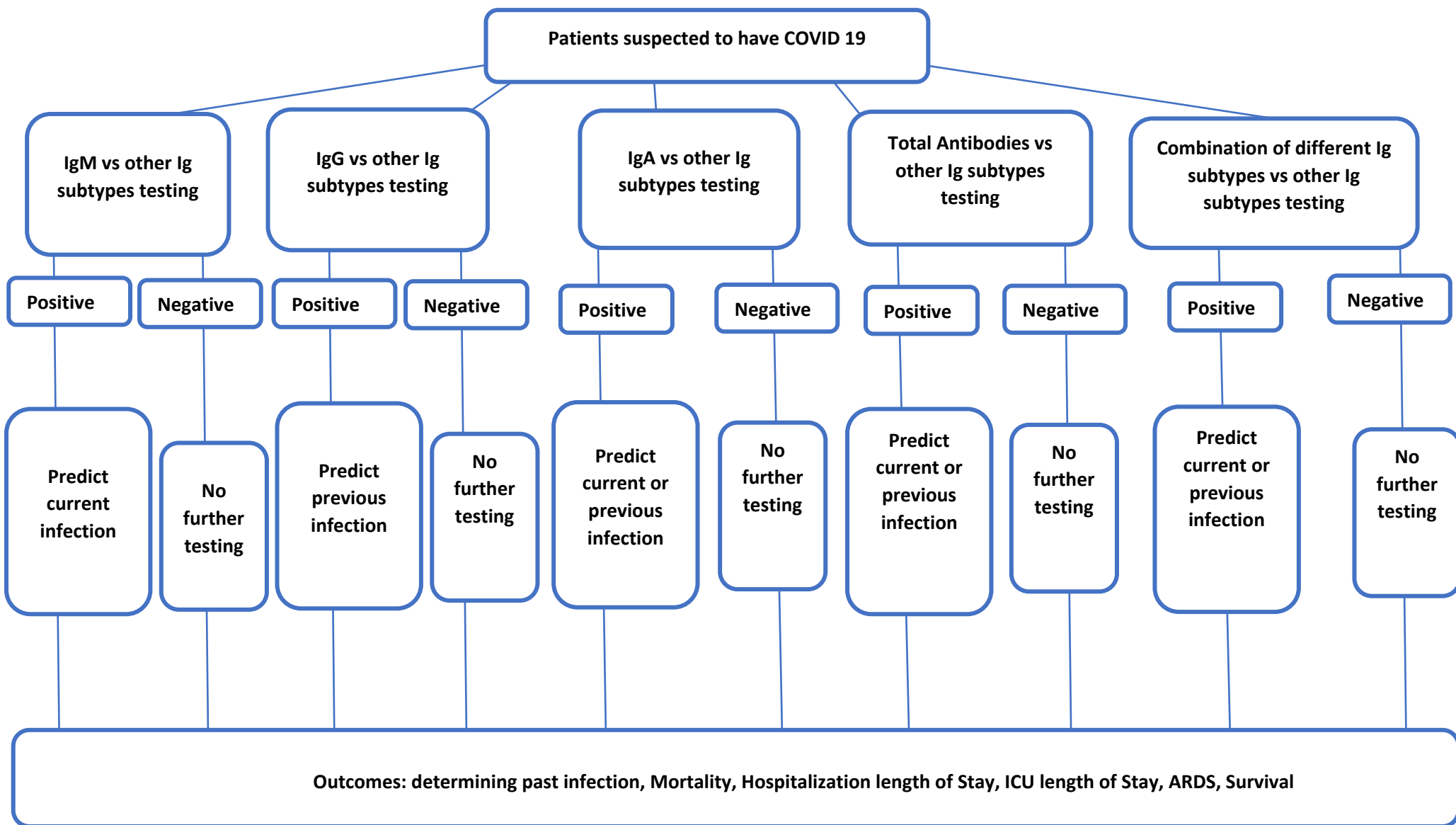
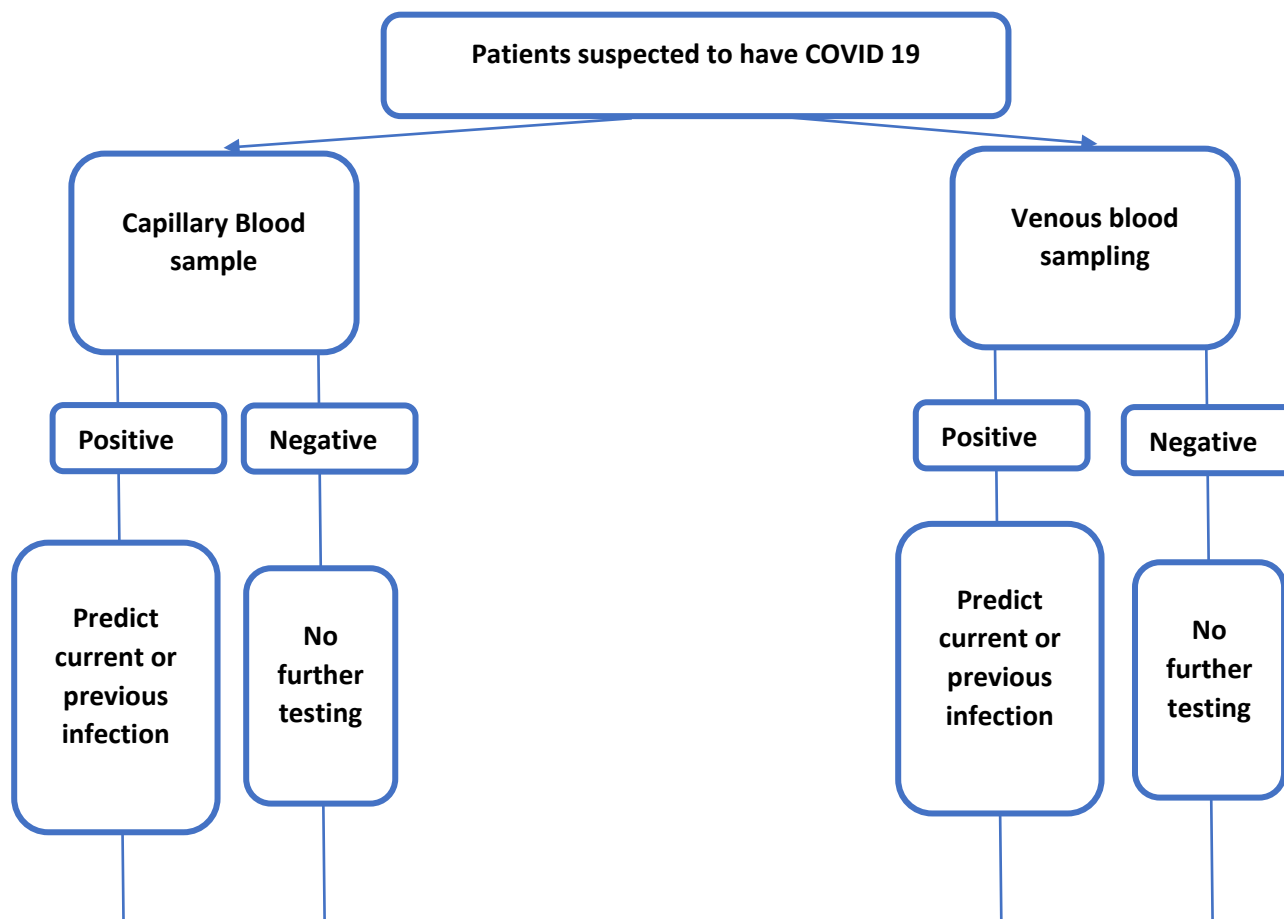


Figure s1. PICO Flow Charts

Should IgM vs. IgA vs. IgG vs. a combination be used for SARS-CoV-2 serologic testing?

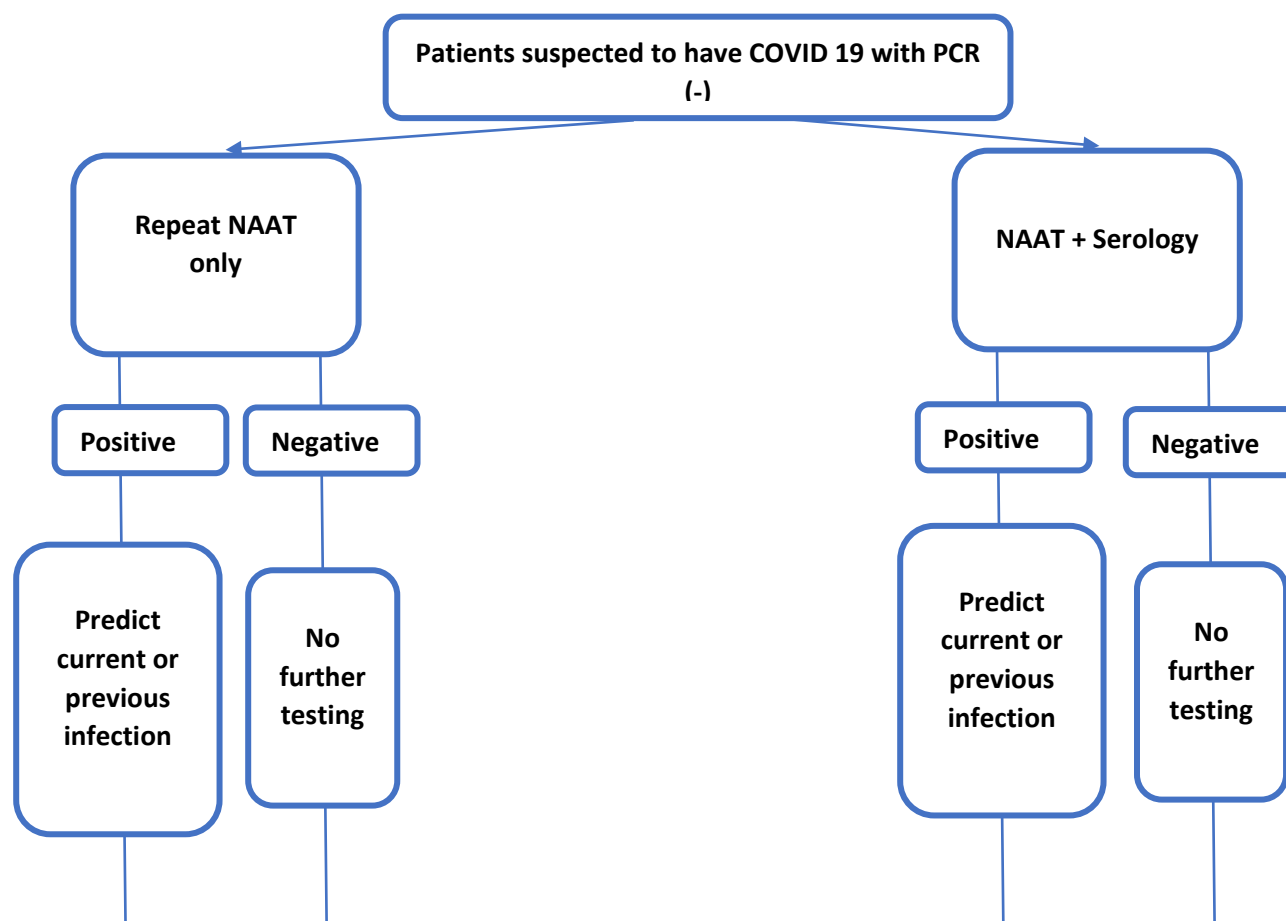


**PICO: Should rapid serology (capillary blood) vs. standard serology (venous blood) be used to detect SARS-CoV-2 antibodies?**



**Outcomes: Determining current or past infection, Mortality, Hospitalization length of Stay, ICU length of Stay, ARDS, Survival**

**PICO: Should NAAT alone vs. NAAT plus serology (when initial NAAT is negative) be used to diagnose COVID-19 in symptomatic patients?**



**Outcomes: Determining current or past infection, Mortality, Hospitalization length of Stay, ICU length of Stay, ARDS, Survival**